

A Citizen's Guide to
Tree Planting Projects
In Northern Virginia



*A “How to Do It”
Resource Guide*

INSIDE

- Project planning
- Getting started
- Getting permission
- Designing your project
- Planting your trees
- Contacts and resources

INTRODUCTION AND OVERVIEW

WHY PLANT A TREE

“The best time to plant a tree was twenty years ago. The second best time is now.” - proverb

To plant a tree is to leave a legacy that lasts for generations. Trees increase the attractiveness, value, livability, and health of our neighborhoods. Street trees turn freeways and highways into parkways and boulevards. Canopies of trees provide shade, and they screen our neighborhoods from noise and unsightly views.

Trees perform valuable functions to protect natural resources:

- Improve air quality by absorbing carbon dioxide and releasing oxygen
- Improve water quality by taking up nutrients and other pollutants
- Bind the soil and prevent erosion
- Create habitat for countless birds and animals

Trees are an important part of our national heritage. Although changes in land use often result in the loss of trees, citizens can do much to offset this loss through individual tree planting projects. The purpose of this guide is to give you the tools you need to make a difference with a successful tree planting project.

While this guide is designed to help you to complete a project on your own, remember, there are many professionals in Northern Virginia eager to assist you. Enjoy your tree planting experience and the beauty that trees bring to the community.

INFORMATION IN THIS GUIDE

The information in this guide is arranged in five sections:

Part 1: Planning Your Project

- Places and times of year to plant
- Planting along waterways
- How to determine if a site is appropriate for tree planting

Part 2: Getting Started and Getting Permission

- How to determine property ownership
- How to obtain permission and navigate through the permitting process.

Part 3: Designing Your Project

- Assessing your site
- Selecting the right trees for your site
- Sketching your plan
- Purchasing your trees
- Recruiting volunteers

Part 4: Planting Your Trees

- How to plan the day of your tree planting event
- Tools you will need
- Planting guides

Part 5: Contact Information and Other Resources

Note: This publication is meant as a guide only and should not be considered a set of regulations. Guidance is subject to changing local requirements.

OVERVIEW OF BASIC PROJECT PLANNING STEPS

1. Locate and assess your site
2. Determine property ownership
3. Make sure there are no obvious reasons why the project will not work
4. Outline or sketch a planting plan
5. Obtain permission
6. Identify any concerns of surrounding residents
7. Work out any issues
8. Finalize planting plan, giving preference to native trees

PART 1: PLANNING YOUR PROJECT

DECIDE WHERE TO PLANT

While you may have a site in mind, there are many areas where people often consider planting trees:

- Public rights-of-way, along roadways and on median strips, where a neighborhood may benefit from the beautification, screening and noise buffer offered by trees
- Along waterways and throughout sparsely forested stream valleys or floodplains to reduce erosion and to improve wildlife habitat and water quality
- Open space areas that may otherwise require maintenance and use of pesticides and fertilizers if left as a lawn
- Land cleared for development activity that could be reforested
- Parking lot islands and along driveways in commercial developments to reduce thermal pollution and to enhance visual quality
- Stormwater management easements, i.e., next to wet ponds and dry ponds
- Common land around residential developments
- Neighborhood schools with land not used for recreation

Look around your community. Don't be afraid to ask!

CONSIDER PLANTING ALONG WATERWAYS

Trees and shrubs planted along waterways can have a profound affect on the health of streams, rivers and reservoirs, including the Potomac River and the Chesapeake Bay. The wider the buffer, the

better will be the protection of water quality and habitat for wildlife.

But even a narrow strip of trees will improve the health of a stream.

Trees along streams provide many beneficial services:

- Protect stream channel structure and stabilize the shoreline
- Provide important food sources, improving habitat for invertebrates and fish
- Reduce erosion and sedimentation
- Filter pollutants, including nutrients such as nitrogen and phosphorus
- Enhance wildlife corridors, providing cover and food sources for wildlife
- Provide nesting, roosting or den areas for animals
- Improve crop yields in fields adjacent to forested filter strips which serve as wind breaks
- Reduce thermal pollution by providing shade for the stream
- Improve stream water by filtering groundwater flowing through the riparian zone toward the stream

“The presence or absence of trees adjacent to stream channels is one of the single most important factors altered by humans that affects the structure and function of stream ecosystems providing water to estuaries of the Atlantic drainage of eastern North America.” - B.W. Sweeny, Stroud Water Research

PLANNING YOUR PROJECT, continued

BE SURE YOUR PROJECT IS RIGHT FOR THE SITE

Assess the site to see if it is a good place for a planting project:

- Is there access to the site for planting and maintenance (including watering)?
- Are the slopes too steep?
- Is there a stormwater problem that could flood or damage your planting area?
- Is this an area frequently used for recreation?
- Will trees obscure automobile or pedestrian sight lines or block road signs?
- Are there easements and rights-of-way (utilities, water lines, sewer lines, stormwater management easements, etc.) that would prohibit digging?
- Is the area likely to be developed or be part of a road widening project?
- Look above you; will overhead wires become a problem as the trees grow?
- Imagine the trees at full maturity; does the space work?

After you have obtained permission from the owner, **always call the Virginia Utility Protection Service (Miss Utility) at 1.800.552.7001 well in advance** to make sure there are no restrictions on digging. This is a free service and is required by law.

DEFINE THE PURPOSES OF YOUR PROJECT

Some trees are better than others when it comes to a particular job. Therefore, it is important to recognize the purpose of your project before working on a specific design. Trees are commonly planted for a variety of reasons:

- Provide shade and reduce heat or thermal pollution
- Provide shelter from winds
- Screen unsightly views
- Reduce pollution and improve water quality

- Provide privacy
- Create boundaries for traffic control
- Control erosion and conserve soil
- Increase or improve wildlife habitat
- Improve landscape features
- Increase property values

PLANT AT THE RIGHT TIME OF YEAR

As you plan your project, consider the timing of the project and the type of tree you will be planting:

- Deciduous trees and all bare root trees are best planted when they are dormant, in the late fall, with early spring being the next best time.
- Evergreen trees are best planted in the spring.
- Balled and burlapped trees may be planted any time of the year when the ground is not frozen, except in very hot weather.
- Planting of live stakes, often used along waterways, must occur in the early spring.
- Delivery dates should be timed to coincide with your planting date.



An opportunity for tree planting!

PART 2: GETTING STARTED AND GETTING PERMISSION

GETTING STARTED

Allow plenty of time to obtain the proper permissions and to plan your project. Some simple detective work and a few calls will have you on your way to a successful tree planting project!

DETERMINE PROPERTY OWNERSHIP

There is nothing worse than seeing your saplings mowed or removed because they were planted without proper permission. Because property boundaries can be deceiving, it is usually best to double check ownership.

Typically, the first step in determining ownership is to locate the property on a “tax map.” A tax map shows individual parcels or properties in two ways: by tax map number and by street address. You can find a copy at your local county supervisor’s office, through the planning department of your local jurisdiction, or at a library or governmental center. See **Contacts and Resources** for web address of northern Virginia counties, cities and towns. A tax map will often provide invaluable information on easements and major underground utilities. Make a copy of the tax map for future reference.

Once you know the address of the property, there are several ways to look up the owner. You can start by going to the web site for your local government, usually the department of tax administration. See **Contacts and Resources**. Be sure to have the tax map on hand when you call.

OUTLINE YOUR PLAN

Before you contact the owner, develop a generalized sketch of your plan to show to the property owner. Being prepared will help address any concerns.

Be able to discuss why you are initiating the project. Eventually, the purpose of the project will determine the types of trees that you pick for a given site. In some instances, such as projects around stormwater

management ponds and VDOT rights of way, a list of acceptable trees will be provided to you. See **Designing Your Project** for more information on how to sketch a planting plan and select trees.

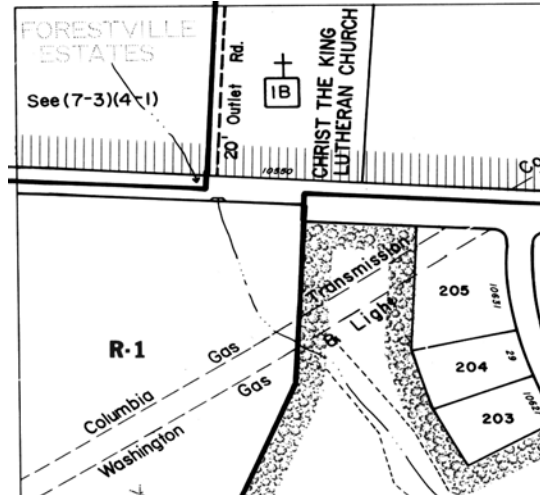
OBTAIN PERMISSION

A simple call or visit will suffice if the owner is an individual or business. If the property is community open space, a call to the property manager or homeowners association is the best place to start.

Always be prepared and anticipate questions. Be sure to get permission in writing and check to be sure that the land owner will maintain the area.

The owner will have additional information on whether the project is located in a right of way or an easement. Stormwater management easements are particularly troublesome because they can blend into other open space areas. Don’t be disappointed if the answer is no. Other property owners in the area may be happy to host a project!

Many vacant parcels belong to a public agency or are the result of a public use easement. Plantings around stormwater management facilities, for



Example of a tax map section

SAMPLE TREE PLANTING REQUIREMENTS OF PUBLIC AGENCIES

- Obtain a planting request form from the agency.
- Sketch a planting plan which illustrates the site and the location of each planting (and plant if possible), by species, quantity, and size of plant material.
- At least 60 days prior to the proposed planting date submit the planting request and accompanying planting plan to the agency.
- The agency will review the submission and formulate any necessary changes.
- After receipt of the request, the agency will arrange an on-site meeting to discuss the plan and any changes or outstanding issues. If acceptable changes to the plan cannot be made at the on-site meeting, the requestor may be asked to submit another plan.
- The agency will provide final approval in writing. A copy of the approved plan will be returned to the requestor. No changes are to be made to the approved planting plan without prior approval of the agency.
- After receiving your approved plan, you must call Miss Utility at least one week prior to planting. Do not dig until the area has been marked, approved for digging, and a job number has been issued (it is the law). Follow any planting guidelines which are provided with your approved sketch plan.

example, must be approved by the owner, whether a homeowners association or the locality's department of public works.

Contact your local jurisdiction for information on planting on public land. Your jurisdiction may have specific guidelines for acceptable locations, tree species and procedures for preparing a planting plan. In general, authorization is required for all planting proposed within stormwater management easements in and around stormwater management ponds. Areas off limits to planting include dam embankments, emergency spillways, pond bottoms, maintenance access areas, and areas closer than ten feet to structural elements such as concrete channels and stormwater pipes.

COORDINATE, COORDINATE

Involve others in addition to the property owner. You will avoid problems and maybe even get some help by involving neighbors early. Although it may not be obvious to you, the trees may block someone's view or light. For high visibility projects, it is good to contact your local county supervisor, a city or town council member, or other local government official. See **Contacts and Resources** for a web link to contact information. Coordinating early will help smooth over any of these potential conflicts.

NEED ADDITIONAL HELP?

A number of public and private organizations are dedicated to preserving and planting trees in the region and can be contacted for additional information or assistance. See **Contacts and Resources**. Be sure to allow extra time to gather information for your project.

PART 3: DESIGNING YOUR PROJECT

PLANNING IS EVERYTHING

A successful tree planting project requires planning! A little work now will make sure that your tree planting goes smoothly and continues to provide benefits for years to come.

REVIEW THE PURPOSES OF YOUR PROJECT

As mentioned earlier, there are a variety of reasons for planting trees. Consider the qualities of your site and the purposes of your project as you work on your planting design. Be sure to select trees that when fully grown will provide shade, shelter, screening, privacy, habitat and/or aesthetic values desired for the site.

ASSESS YOUR SITE

Try to learn of any long-term plans for your site. Consider a number of factors:

- The space a mature tree will take up in the planting location
- How trees will best fit the space (i.e., short versus tall, vertical versus branching, tap root versus spreading roots, etc.)
- Structures such as utility wires, transformers, cable pedestals, sidewalks, fences, driveways or house foundations that may conflict with branches, crowns, or roots when the tree reaches maturity
- The hours of light the tree will receive on a daily basis (full, part, or shade)
- Climatic conditions (Hardiness Zone Maps can be found on the web; Northern Virginia is located in Plant Hardiness Zones 6b and 7a)
- The amount of moisture the tree will receive (moist, semi-moist, or dry)
- The type of soil in which the tree will be growing (rocky, clayey, compacted, rich)
- The amount of maintenance the tree will require

SELECT TREES THAT MEET YOUR PLANTING PURPOSES AND SITE CONDITIONS

Once your planting purposes have been determined and the size and environmental limitations identified, it is time to choose your trees. A mix of native tree species will provide better wildlife habitat and screening. However, there may also be good reasons for choosing a single species. Evaluate your site carefully.

Be sure to select the right trees for the site:

- Identify the dominant native species already growing around the site
- Select trees that have demonstrated hardiness characteristics for harsh conditions (parking lots, reclaimed land, construction sites, periodic inundation)
- Give preference to native species of trees, since they are acclimated to the region's climate.

Most horticultural literature provides helpful information on recommended uses, size at maturity, and environmental tolerances of specific trees. Foresters at the Virginia Department of Forestry are available to provide advice on tree mixtures suitable for various wildlife habitats, screening, use in wetland areas, and for erosion control. The Virginia Native Plant Society can provide information about low maintenance species, and nursery or garden center personnel can also be good sources of advice. See **Contacts and Resources**.

CHOOSE THE RIGHT TREES WHEN PLANTING ALONG WATERWAYS

Planting in riparian areas, i.e., along streams, rivers, and reservoirs, requires some special attention to the challenges presented by wildlife, invasive species of plants, flow of water and constantly changing conditions. Most areas along streams include moist lower slopes, transitional zones in the form of terraces or benches, and drier uplands. Efforts

DESIGNING YOUR PROJECT, continued

should be made to restore the plant communities native to the area with at least several species of non-invasive, water-tolerant native trees and shrubs.

For an excellent example of a riparian buffer planting project, complete with guidelines for planting in riparian areas with a variety of water-tolerant species of trees, please refer to Case Study: Difficult Run Riparian Project (see **Contacts and Resources**).

Tree planting projects along streams often include live stake plantings. Live stakes are unrooted, dormant cuttings from trees such as dogwood and willow. In these areas, be sure to use tube tree protectors (also known as tree shelters) to prevent animal damage. These tubes need to be monitored periodically, but the tubes do not need to be removed as they will degrade in sunlight over time.

SKETCH YOUR PLAN

Create a simple sketch showing the scale and location of existing buildings, driveways, sidewalks, streets, septic fields, trees, and open spaces. Note special conditions, including low/wet spots, disturbed areas, areas which receive little sunlight, existing specimen trees, steep slopes, unsightly views, and sources of noise. A good base for creating your sketch is a tax map (see **Getting Started and Getting Permission**) or property plat from the purchase of a property. Don't be afraid to draw your own plan from scratch.

If you are unsure what planting density and pattern to use, a common practice is ten feet from the center of one seedling to the next for trees and five feet from the center of one seedling to the next for shrubs. Seedlings should be dispersed in clumps, evenly or in a random pattern. Avoid planting in rows of one species, unless done for a specific purpose (such as street trees) or if site constraints

don't allow an alternative. Finally, if trees are to be planted in a mowed area, try to group trees in large mulch beds. Maintenance will be easier if trees are planted as a grove in a single mulch bed, than if they are planted with individual mulch rings. Be sure not to pile mulch against tree trunks.

PURCHASE YOUR TREES

Trees can be purchased through the Virginia Department of Forestry or a local nursery. The Northern Virginia Soil and Water Conservation District hosts an annual seedling sale in late winter. See Resources at the end of this guide. If the trees are selected from a nursery, they should be free of insects and diseases. The root ball, trunk, and crown should be undamaged. Make sure you order trees at the right time of year for planting (see section on planning your project above).

A tree planting project does not need to be an expensive proposition. Some local tree planting groups may be able to provide trees for free or at cost. Many of the resources listed in **Contacts and Resources** can provide information on grants.



*Trees provide welcome shade
in parking lot areas*

PART 4: PLANTING YOUR TREES

Remember, a no cost alternative to tree planting is to establish a no-mow zone where native tree seeds can take root. You can help this process along by collecting seeds and dispersing them. “Growing Native,” a program of the Potomac Conservancy’s Potomac Watershed Partnership, coordinates the collection and planting of nuts and seeds to protect the health of rivers and streams.

PROTECT YOUR TREES BEFORE PLANTING

The root ball, trunk and crown of trees should be protected from wind, sun, and physical damage during transportation:

- Wrap larger trees with a tarp and secure them properly to the vehicle.
- Wrap seedling roots in plastic to contain moisture; keep roots moist at all times.
- Keep the soil of container or balled-and-burlapped trees moist until planting.
- Plant the trees as soon as possible after delivery.

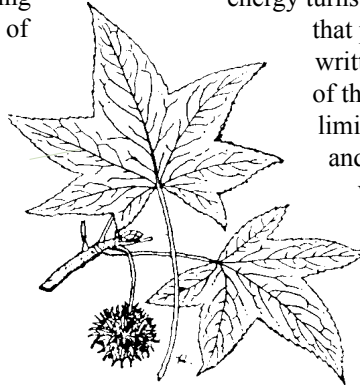
RECRUIT VOLUNTEERS

Recruiting volunteers will help increase awareness of the project and expand your base for future maintenance. Sources of volunteers are many:

- Neighbors, community association members
- Volunteer centers
- Scouts
- Faith-based youth groups
- Student Conservation Association
- School groups

PLANT YOUR TREES

After the project date has been set, the plants ordered and volunteers contacted, the flow of energy turns toward logistics. Always ensure that participants have both a map and written directions to the site and a copy of the final planting plan. If parking is limited, indicate where it is available and encourage car pooling. Send volunteers a list of the tools they will need, whether or not they need to bring bag lunches and/or water, and what is considered appropriate dress (i.e., boots or old shoes, gloves and long pants).



HAVE THE RIGHT TOOLS

Tools and materials that are essential for a reforestation project include the following:

- Shovels, pick axes, and/or trowels
- Hammers and pruners
- Small wooden blocks to settle tree protectors
- Plastic grocery bags to distribute seedlings (this keeps the roots moist)
- A bucket of water to soak seedlings for fifteen minutes prior to planting
- Safety vests and traffic control cones if the planting is located in a VDOT right-of-way or near the street

A Note on Tree Protectors: Tree protectors, also known as tree shelters, are translucent plastic tubes that protect seedlings from lawn mowers and animals. If you are unsure whether tree protectors should be used, consider mowing practices in the area and the presence of deer, beaver, and/or rodents.

PLANTING YOUR TREES, continued

BARE ROOT PLANTING GUIDE

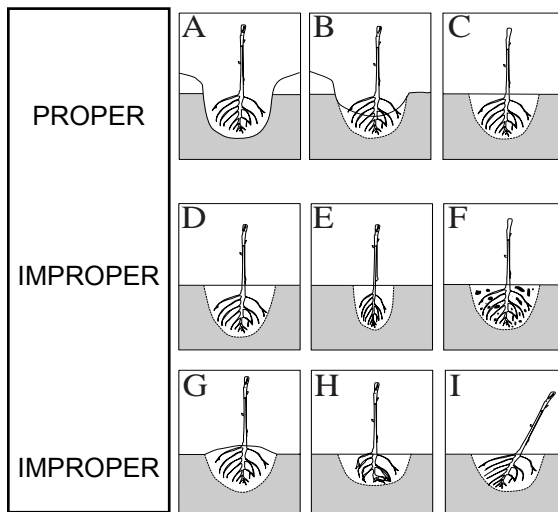
Before planting bare root plants, remove damaged or diseased roots with clean, sharp pruning shears.

Proper planting

- A. Dig a hole slightly larger than the roots when spread out.
- B. Set seedlings at the same depth as at the nursery (note soil line on the stem). Untangle and spread roots to a natural position. Partially fill the hole and firm the soil. Add water.
- C. Fill the hole, firm the soil, water again, and add loose soil, leaves, etc. as mulch. Important: Do not pile mulch against the trunk of the tree.

Improper planting

- D. Hole too deep
- E. Compacted roots, hole too narrow.
- F. Air pockets remain, organic debris in hole.
- G. Exposed roots, hole too shallow.
- H. "J" roots, hole too shallow.
- I. Not vertical; hole too shallow.



An Important Note about Mulch!

Although not shown in the diagrams above, be sure not to pile mulch up against the tree trunk. Mulch attracts insects which will damage the bark of your tree.

PLANTING YOUR TREES, continued

PLANTING GUIDE FOR CONTAINER, BALLED AND BURLAPPED TREES

1. Dig a hole.

- Dig a wide hole, two to three times the width of the root ball.
- Do not dig too deep. The top of the roots or root ball should be level with or slightly above the surface of the ground.
- Widen the hole, and score the hole wall.

2. Prepare the tree.

- Remove container and cut circling roots if container-grown, or as much burlap as possible if field grown.
- Remove top of wire basket below the soil surface so wires do not interfere with raking.
- Cut away all hauling ropes.
- Remove tags and labels.

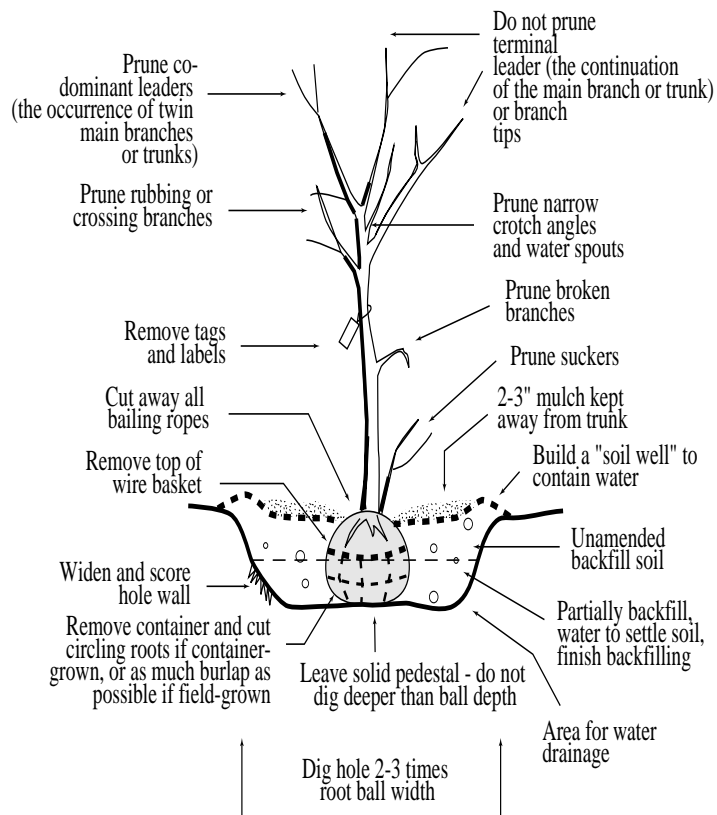
3. Place tree in the hole.

- Place tree in hole before removing the burlap covering.
- Pull the burlap down and off the root ball but leave burlap in the bottom of the hole.
- Avoid damaging roots; do not attempt to pull burlap from under the plant.
- Be sure the hole is no deeper than the root ball.

4. Fill the hole.

- Partially back fill hole. Then water to settle the soil.

- Finish backfilling with original soil or other local topsoil.
- Build a "soil well" or berm on the outside edge of the hole to contain water.
- Place mulch about 2 to 3 inches deep around the tree.
- Do not pile mulch against the trunk of the tree.
- Water again to settle the remainder of the soil.



PLANTING YOUR TREES, continued

FOLLOW THROUGH!

Be sure to thank your volunteers for their efforts. Follow-through is also essential for the survival of your plants. Your plants are under a lot of stress and will most likely require periodic weed control and watering. Invite volunteers to become tree stewards for that site. Make a schedule in advance for visiting and maintaining your site. Be patient, as it may be a year or two before your trees show signs of good growth!

CREATE A PHOTO LOG

Document the success of your project. Find a reference point and take a picture of your project with the sun at the photographer's back. Note the angle and location of the camera and take photographs from the same position over time. Mornings and late afternoons are best for contrast.

SEEK HELP

A number of public and private organizations are dedicated to preserving and planting trees in Northern Virginia and can be contacted for information or assistance. Please see **Contacts and Resources** at the end of this guide.



Planting a tree is a fine way to remember a person or an event

CONTACTS

General Assistance

Virginia Cooperative Extension
For contact information and directions to local VCE offices:
<http://www.ext.vt.edu/offices/>

Virginia Department of Forestry
Fairfax County 703.324.1489
Fauquier County 540.347.6358
Loudoun County 703.777.0457
Prince William County 540.347.6358

Urban Foresters
Contact your local government offices. For contact information:
<http://www.novaregion.org/members.htm>

Fairfax ReLeaf (serving Northern Virginia)
703.324.1409

Property Ownership

Call your local jurisdiction's department of tax administration or public works for information. Another place to start is with the office of your local county supervisor, city hall or town hall. Local government web sites have contact information for elected officials.

Links to Web Sites of Northern Virginia Counties, Cities and Towns
<http://www.novaregion.org/members.htm>

Plantings on Public Land

Depending on location, call your local parks department, school system, public works department or Virginia Department of Transportation for authorization to plant on public land.

Tree Selection

Arbor Day Foundation
<http://www.arborday.org/>

Virginia Cooperative Extension, see **General Assistance**.

Soil and Water Conservation Districts
Loudoun 703.777.2075
Northern Virginia 703.324.1460
Prince William 703.594.3621

Virginia Department of Forestry
Forest Trees of Virginia
(Publication #26, Charlottesville, Virginia)
<http://www.dof.virginia.gov/mgt/trees/index.shtml>

Contact VDOT (see p. 14) or your local public works agency for a list of suggested tree species for rights-of-way and stormwater management easements.

Native Plants

Virginia Department of Conservation and Recreation
Native Plants for Conservation, Restoration and Landscaping, <http://www.dcr.virginia.gov/dnh/native.htm>

Virginia Native Plant Society
<http://www.vnps.org/>

Trees and Shrubs for Overhead Utility Easements

Provides conflict resolution options and tree selection and planting
<http://www.ext.vt.edu/pubs/trees/430-029/430-029.html>

CONTACTS AND RESOURCES, continued

Sources of Seedling and Saplings

National Arbor Day Foundation (see **Resources**)

Virginia Department of Forestry, Seedling Catalogue

<http://www.dof.virginia.gov/nursery/cat-intro.shtml>

Northern Virginia Soil and Water Conservation District, 703.324.1460

<http://www.co.fairfax.va.us/nvswcd/default.htm>

Trees on Public Rights of Way

Virginia Department of Transportation, 703.383.8368

Guidelines for Planting along Virginia's Roadways

Locate Underground Utilities

Virginia Utility Protection Service (formerly Miss Utility) 1.800.552.7001

Planting Riparian Forest Buffers

Virginia Department of Forestry (An Excellent Local Example)

Guide for Riparian Restoration Projects: Difficult Run Case Study

Provides a wealth of information, including riparian forest buffers, site selection, project planning, and planting instructions.

<http://www.dof.virginia.gov/rfb/rfb-diff-run-study.shtml>

United States Department of Agriculture, Forest Service

Riparian Forest Buffers – Function and Design for Protection and Enhancement of Water Resources.

Illustrated, with specifications for planting buffer zones

http://www.na.fs.fed.us/spfo/pubs/n_resource/riparianforests/

Virginia Chesapeake Bay Local Assistance
Virginia Department of Conservation and Recreation

Riparian Buffer Modification and Mitigation Guidance Manual

<http://www.cblad.state.va.us/ripbuffstat.cfm>

Virginia Coastal Program

A Stream Corridor Protection Strategy for Local Governments

http://www.virginia.edu/ien/stream%20guide_final.pdf%20

RESOURCES

American Forests

Create a Community Tree Planting Project:
Eight Steps for Citizens
[http://www.americanforests.org/resources/
communitytreeplanting/](http://www.americanforests.org/resources/communitytreeplanting/)

National Arbor Day Foundation

Online Tree Store

Tree Information

Tree Planting Resource Kit for Volunteers

<http://www.arborday.org/>

Includes an 80-page resource guide, training video for volunteers, reproducible materials packet and other features at a cost of \$29.95

[http://www.arborday.org/shopping/
merchandise/merchdetail.cfm?id=73](http://www.arborday.org/shopping/merchandise/merchdetail.cfm?id=73)

Trees Are Good

The International Society of Arboriculture (ISA) created this web site to provide the general public with information on quality arboriculture, or tree care.

<http://www.treesaregood.com/>

TreeLink: The Urban Forestry Portal

Provides Internet-based tools, education and inspiration for community forestry projects

<http://www.treelink.org/>

The Simple Act of Planting a Tree: A Citizen Forester's Guide to Healing Your Neighborhood, Your City, and Your Yard

[http://www.treelink.org/books/simpleact/
index.htm](http://www.treelink.org/books/simpleact/index.htm)

U.S.D.A. Hardiness Zone Map

<http://www.usna.usda.gov/Hardzone/hzme1.html>

Virginia Cooperative Extension

<http://www.ext.vt.edu/>

Click on: Educational Programs and Resources: Forestry, Fisheries and Wildlife: Urban Forestry or go directly to:

[http://www.ext.vt.edu/cgi-bin/WebObjects/
Docs.woa/wa/getcat?cat=ir-for-uf](http://www.ext.vt.edu/cgi-bin/WebObjects/Docs.woa/wa/getcat?cat=ir-for-uf)

Virginia Department of Forestry

Urban and Community Tree Care

<http://www.dof.virginia.gov/urban/index.shtml>

Virginia's Natural Resources Education Guide

<http://www.vanaturally.com/forests.html>

VolunteerMatch

Find and post volunteer opportunities

<http://www.volunteermatch.org/index.jsp>



ACKNOWLEDGEMENTS

This project of the Northern Virginia Regional Commission was funded through the Virginia Department of Forestry Urban and Community Forestry Assistance Program Region 8.

NVRC wishes to thank the northern Virginia staff of the Virginia Department of Forestry, Virginia Cooperative Extension, and Fairfax Re-Leaf for their assistance in the update of this guide.

Northern Virginia Regional Commission
www.novaregion.org



Northern Virginia Regional Commission